

DANA INVESTMENT CORPORATION

THE DANA GROUP

1900 Main Street, Ste 360
Irvine, CA 92614

Listing Broker:
Matthew Soussa
949-280-7775

mmsoussa@danainvestments.com

One Southgate Professional Building 6892 S. Yosemite Court, Centennial, CO 80112 Suites 2-103 • 1,949 RSF

I-25 Frontage Office Building
Situated Near Major Exit (Arapahoe)
Demographic Corridor Serving:

Greenwood Village
Centennial
Lone Tree

Total Building Renovation

Bldg Signage Available (Lg Tenant)

Faces Yosemite or I-25

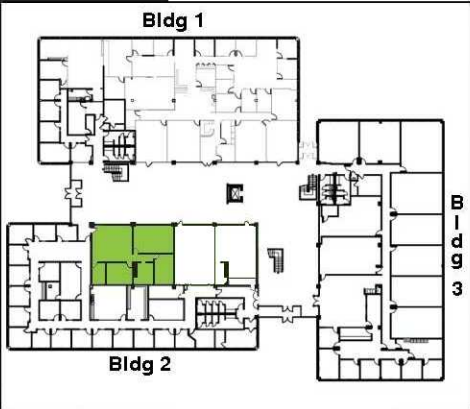
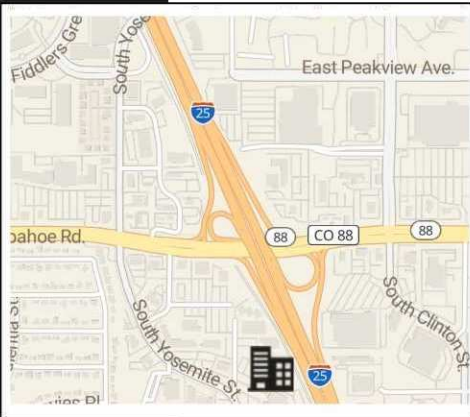
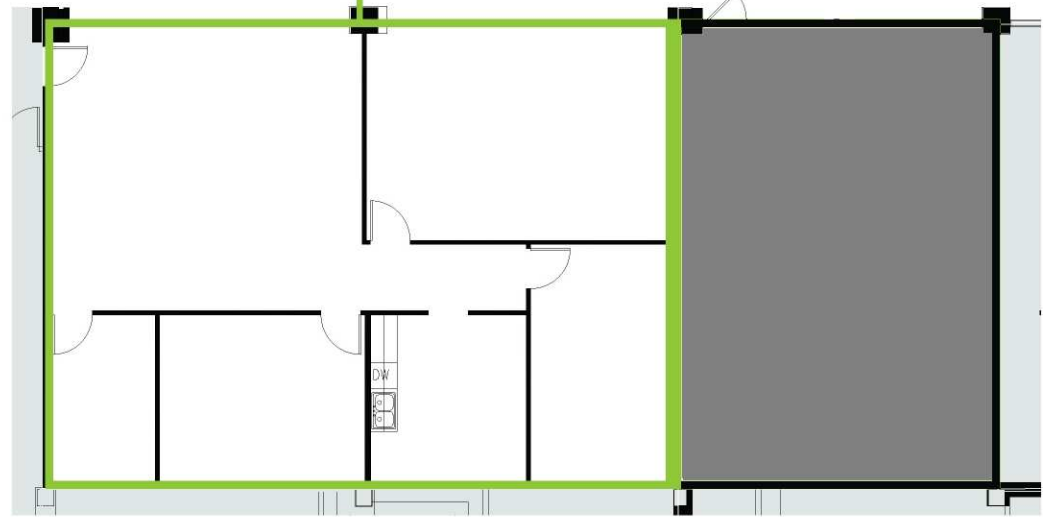
Monument Signage Available

Limited Covered Parking

Underground Storage Available

Great Mountain Views

Suite 103 - 1,949 SF



This information has been obtained from sources we believe to be reliable, however we make no representations or warranties, expressed or implied, as to the accuracy of the information contained herein. References to square footage are approximate. Tenant bears all risks for inaccuracies.